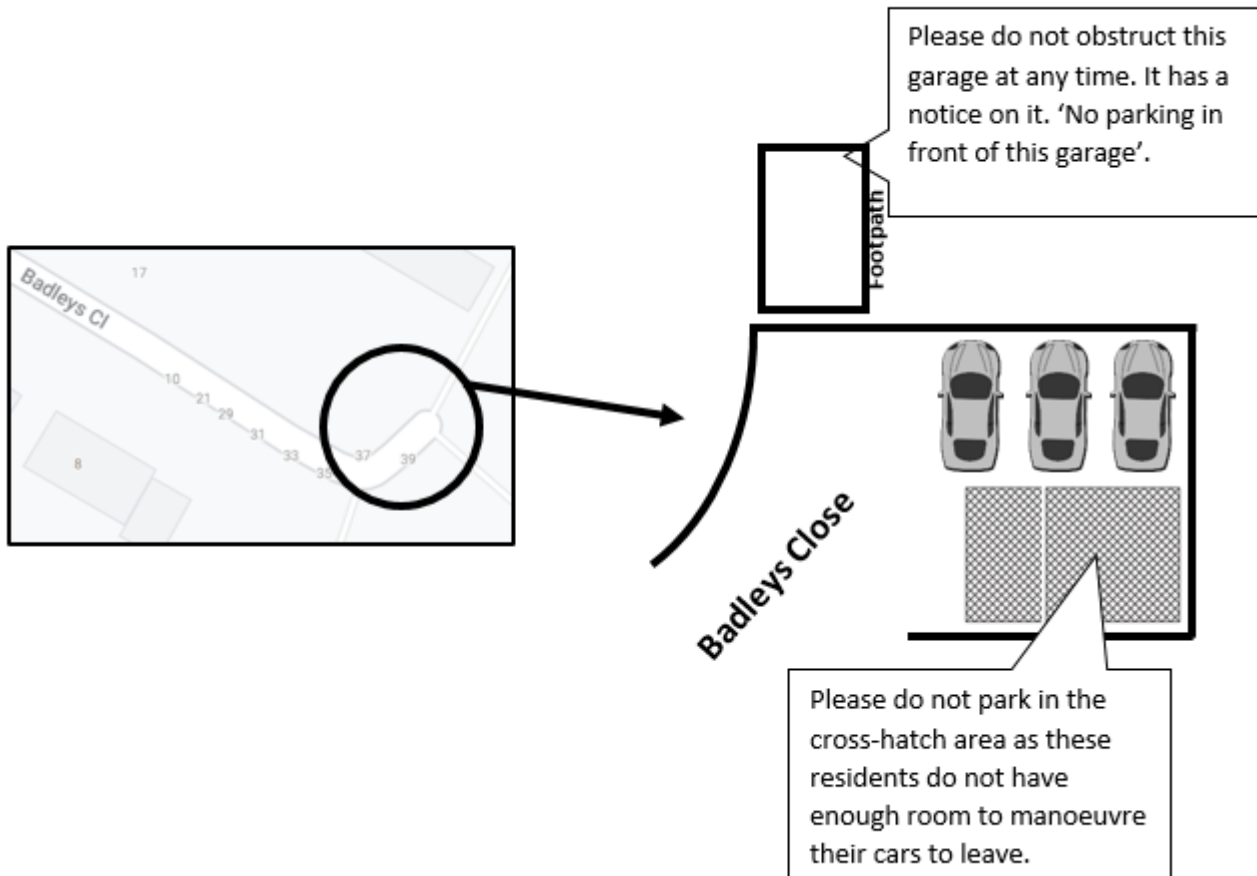


22<sup>nd</sup> November 2021

Dear Parents/Carers

I recently attended a meeting with Mike Kiely from the Neighbourhood Plan Steering Group, Reverend Faith Marsden and Councillor Philip Faircloth-Mutton to discuss the parking around the school during drop-off and pick up

Many of the residents in Badleys Close, Folly Road and Chestnut Close and Chapel Close said that they were not affected by parents parking and also thought that parking around the school has improved. Thank you for continuing to park considerably. However, there were two residents, one from Badleys Close and the other from Braithwaite Drive who continue to be impeded by cars parked inconsiderately. One of these residents needs to attend hospital appointments several times a week. The problem lies at the end of Badleys Close. See below



Thank you for taking time to read this message. Please pass it on to other parents. The residents around the school have been extremely patient and we want to do all we can to maintain a positive relationship with them.

The children will be designing some 'No Parking' notices so look out for them too!

Thank you for your support.

Kind regards,



Mrs Tina J Hosford

Headteacher

